

Ridgefield Public Schools

2009-2010 CLASS SIZE REPORT Summary

Karen M. Dewing
Director of Personnel

Deborah Low
Superintendent

October 26, 2009

Elementary Enrollment By School and By Grade 2009-2010

Grade	BMES	BES	FES	RES	SES	VPS	Total
K	51	55	63	56	50	46	321
1	63	75	54	63	75	47	377
2	50	64	62	79	64	54	373
3	59	68	50	73	56	68	374
4	71	88	69	71	71	56	426
5	70	75	69	80	76	54	424
Total	364	425	367	422	392	325	2295

Elementary Enrollment By School 3 year trend

School	07-08	08-09	09-10
BMES	381	383	364
BES	436	428	425
FES	380	367	367
RES	460	456	422
SES	387	387	392
VPS	342	337	325
Total	2386	2358	2295

Elementary Class Size Practices

Grade Level	Desired Class Size Max in Contract	Current BOE Desired Class Size Practice	Current BOE Class Size Practice	Current BOE Breakpoint Practice
K & Grade 1	20	20	21	22
Grade 2	25	24	24	25
Grades 3 - 5	25	25	26	27

Elementary Class Size Averages By School 2009-2010

Grade	BMES	BES	FES	RES	SES	VPS
K	17.67	18.33	15.75	18.67	16.67	15.33
1	15.75	18.75	18.00	15.75	18.75	15.67
2	16.67	21.33	20.67	19.75	21.33	18.00
3	19.67	22.67	25.00	24.33	18.67	22.67
4	23.67	22.00	23.00	23.67	23.67	18.67
5	23.33	25.00	23.00	20.00	25.33	18.00

Elementary Class Size Averages By Grade Level 2009-2010

Grade	# of Students	Class Size Range	Average Class Size
K	321	14-21	16.89
1	377	15-20	17.14
2	373	16-22	19.63
3	374	18-26	22.00
4	426	18-24	22.42
5	424	16-26	22.32
Total	2295		

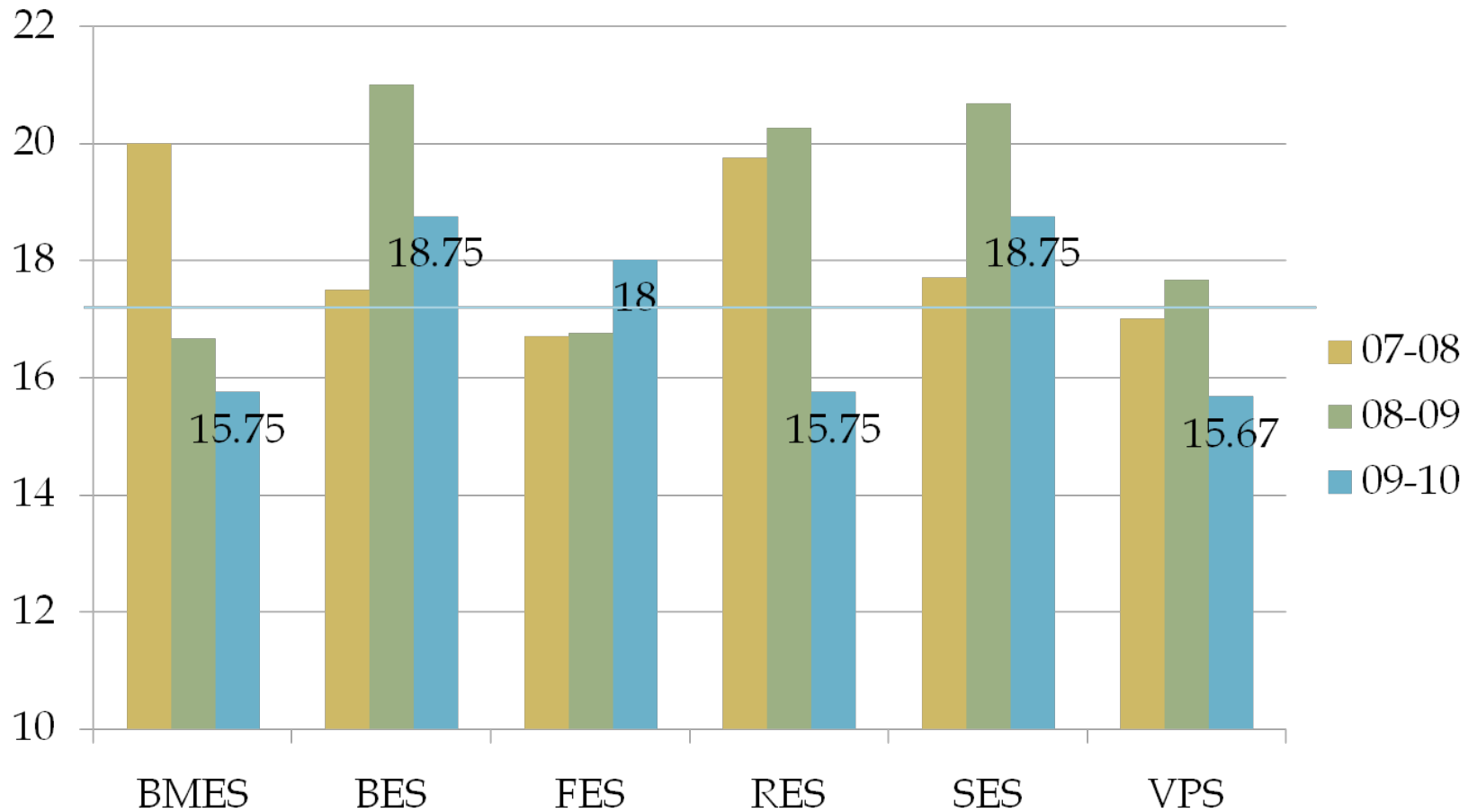
Average Class Size - Kindergarten

3 year trend

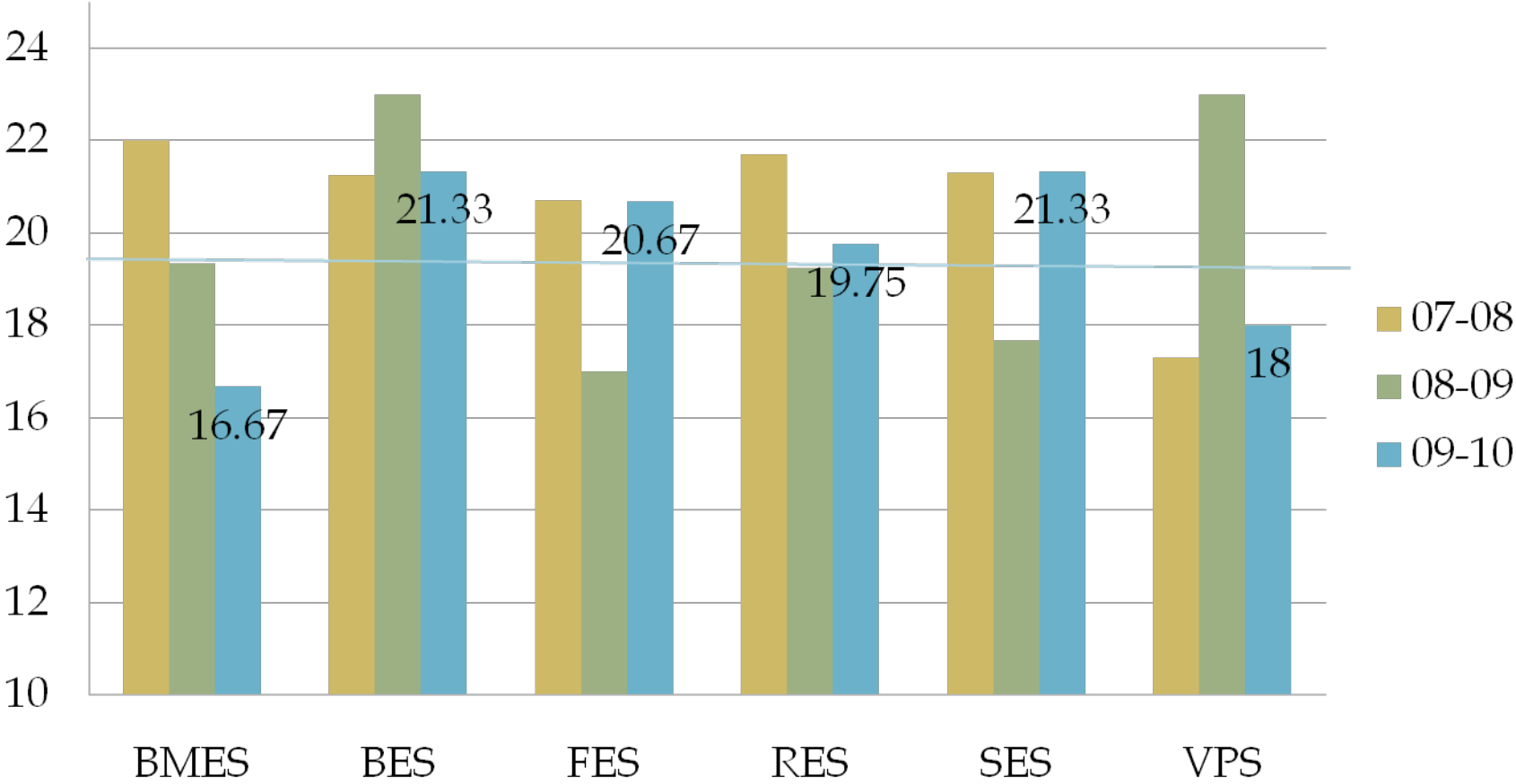


Average Class Size-First Grade

3 year trend

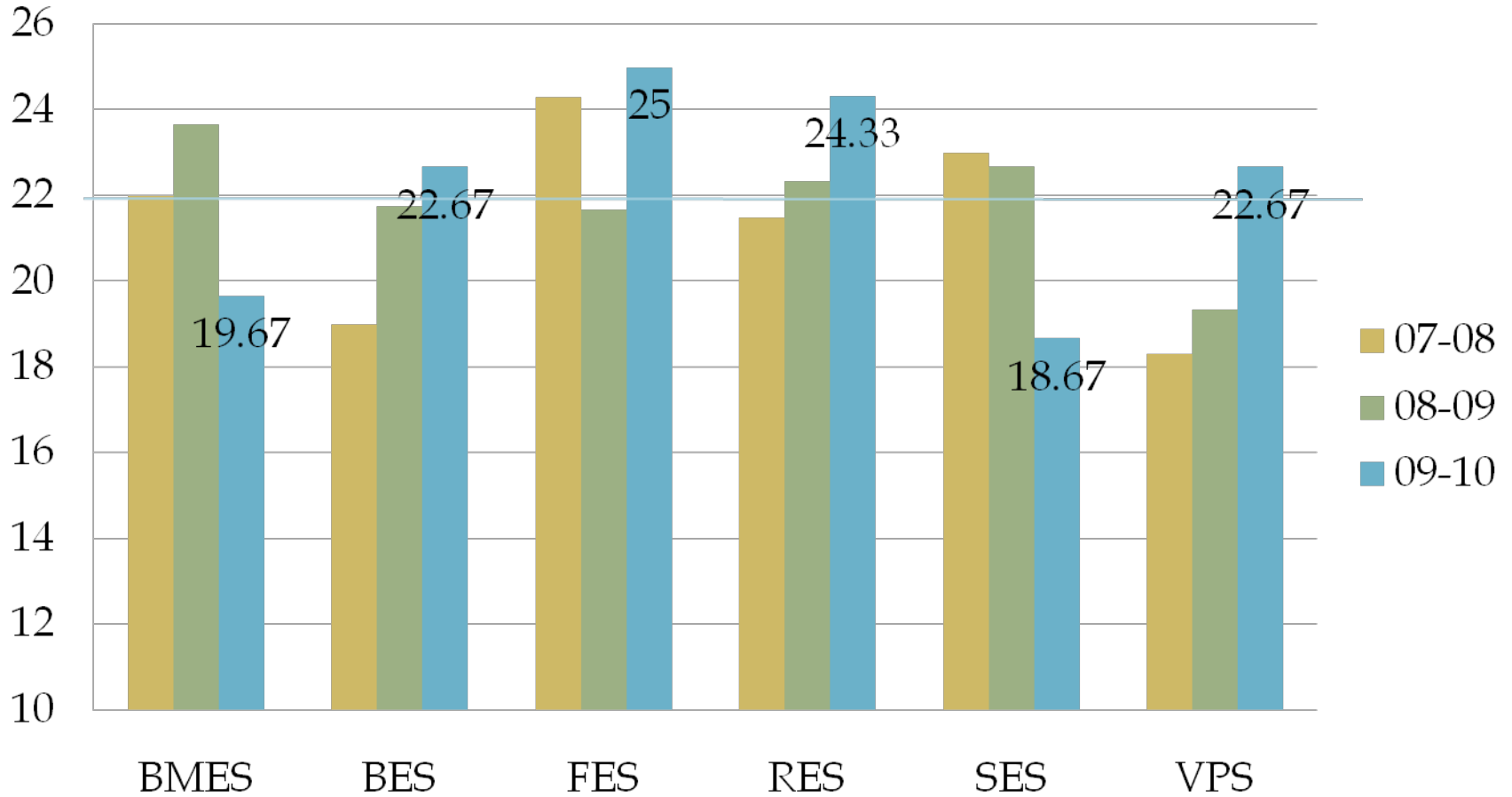


Average Class Size-Second Grade 3 year trend



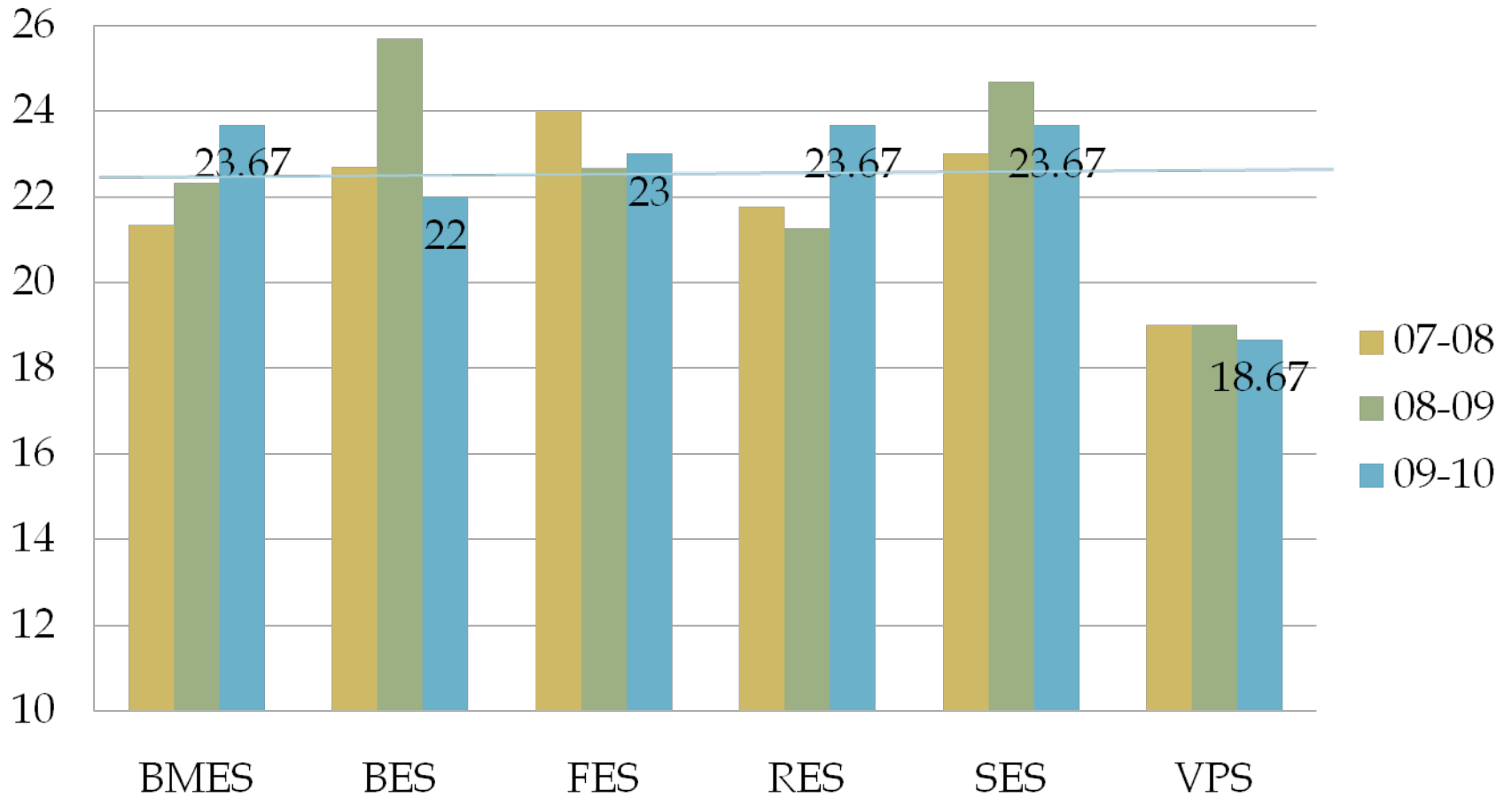
Average Class Size-Third Grade

3 year trend



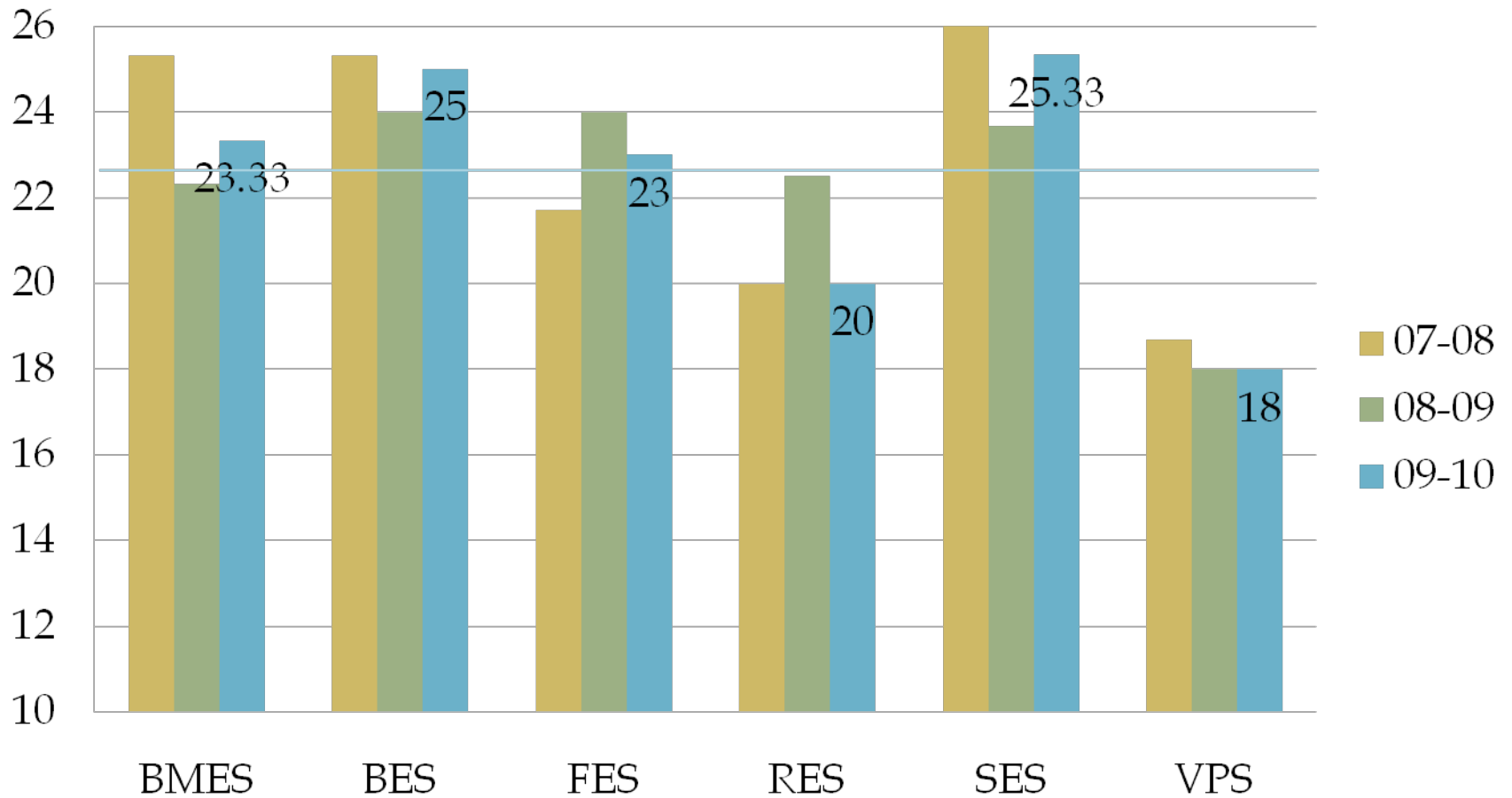
Average Class Size-Fourth Grade

3 year trend



Average Class Size-Fifth Grade

3 year trend



Middle School Enrollment By School and By Grade 2009-2010

Grade	ERMS	SRMS	Total
Grade 6	230	208	438
Grade 7	255	198	453
Grade 8	257	205	462
Total Enrollment	742	611	1353

Middle School Enrollment

3 year trend

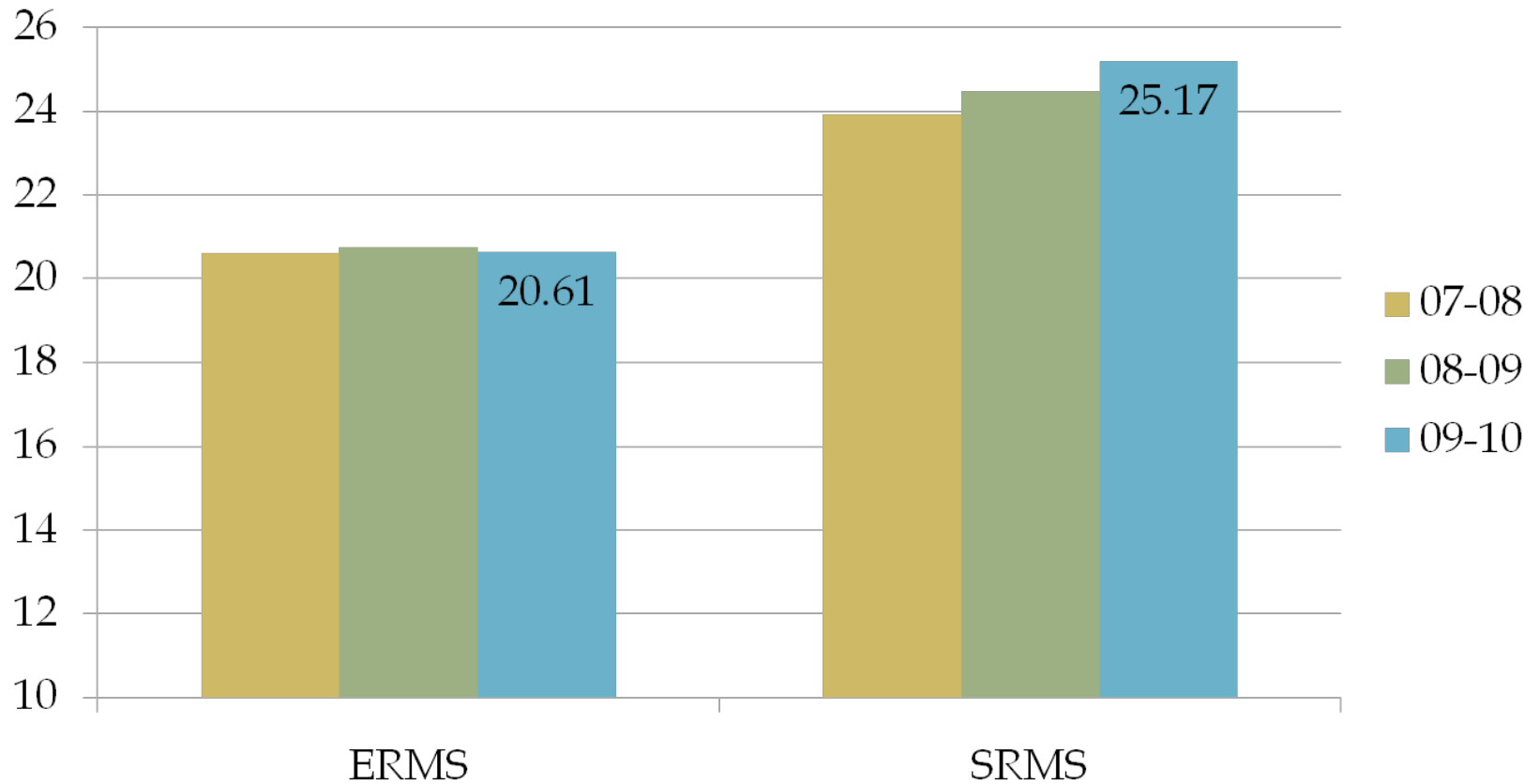
School/Grade	07-08	08-09	09-10
ERMS Grade 6	259	249	230
ERMS Grade 7	230	263	255
ERMS Grade 8	258	237	257
ERMS Total	747	749	742
SRMS Grade 6	196	195	208
SRMS Grade 7	192	203	198
SRMS Grade 8	192	194	205
SRMS Total	580	592	611
Middle School Total	1327	1341	1353

Middle School Class Size Averages By School and By Department 2009-2010

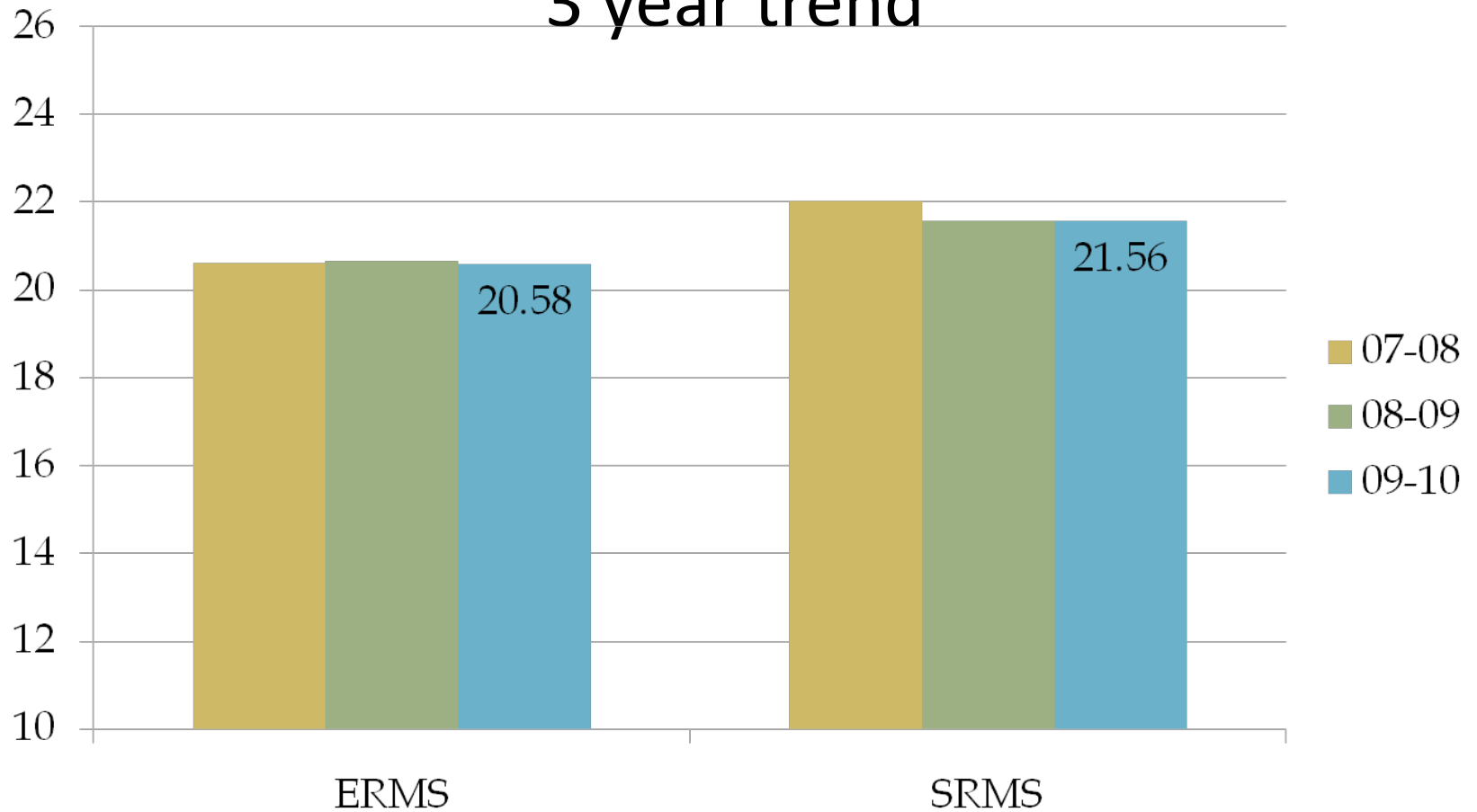
Department	ERMS	SRMS
English	20.61	25.17
Mathematics	20.58	21.56
Science	20.58	25.33
Social Studies	20.58	25.21
Art	24.17	24.54
Family & Cons Science	12.08	12.38
Health	12.10	12.31
Music	24.83	23.17
Physical Education	25.37	25.42
World Language	23.09	20.59

Middle School Class Size Averages – English

3 year trend

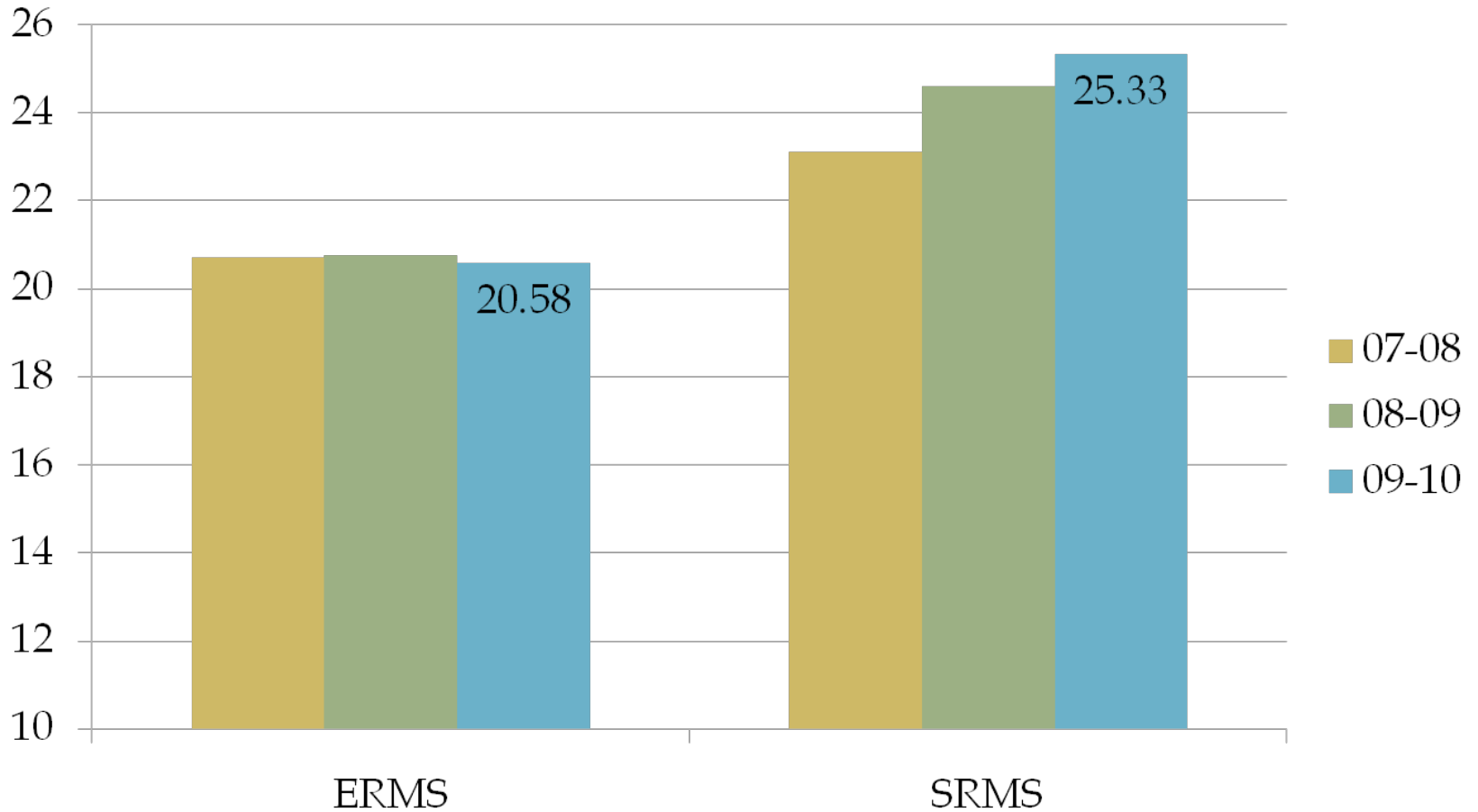


Middle School Class Size Averages – Mathematics 3 year trend



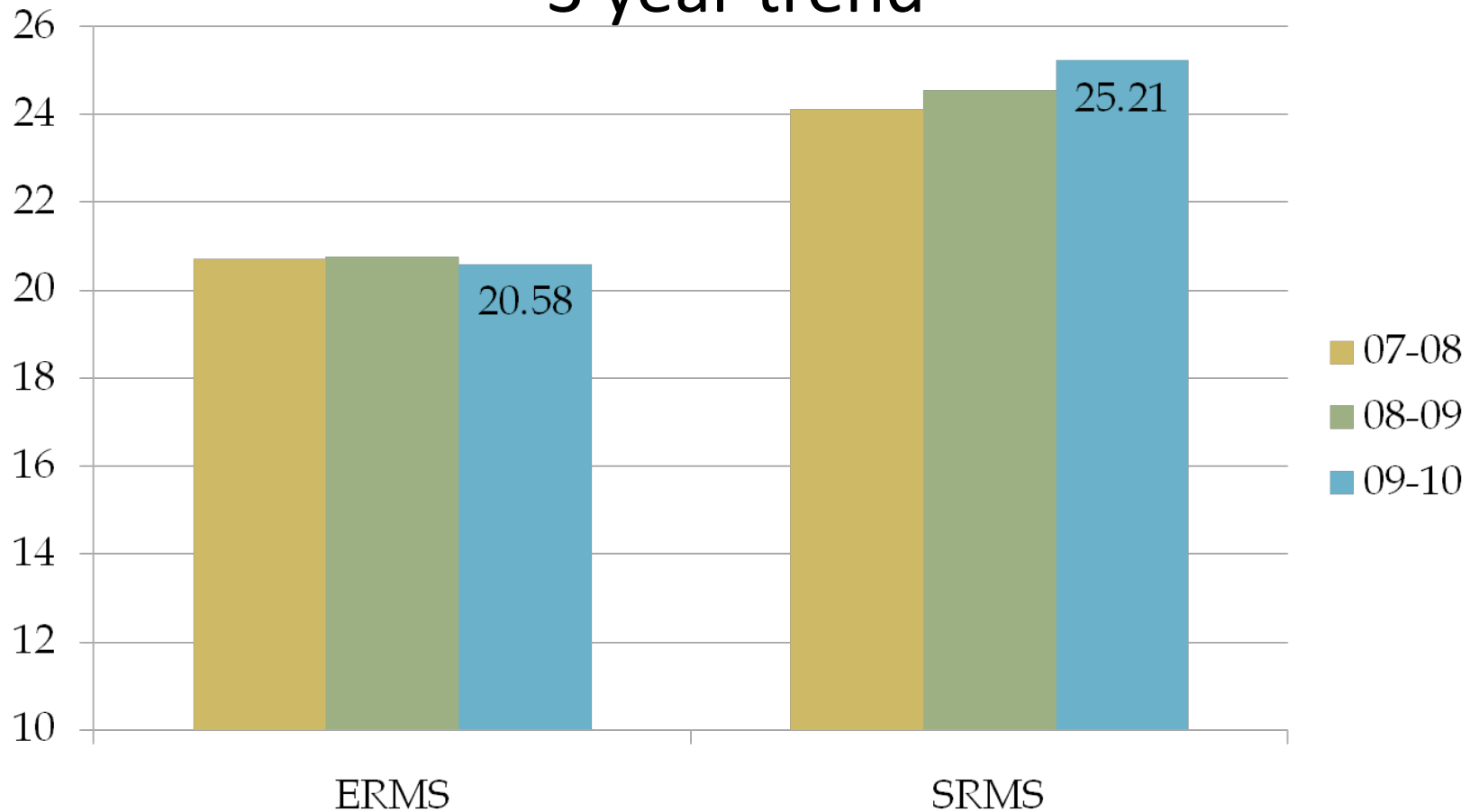
Middle School Class Size Averages – Science

3 year trend



Middle School Class Size Averages – Social Studies

3 year trend



High School Enrollment By Grade 2009-2010

Grade	Enrollment
Grade 9	437
Grade 10	445
Grade 11	430
Grade 12	440
Total Enrollment	1752

High School Enrollment

3 year trend

Grade	07-08	08-09	09-10
Grade 9	446	446	437
Grade 10	453	449	445
Grade 11	439	441	430
Grade 12	436	445	440
Total Enrollment	1774	1781	1752

High School Class Size Averages By Department 3 year trend

Department	07-08	08-09	09-10
English	20.9	21.68	21.69
Mathematics	19.9	20.11	20.69
Science	20.6	20.77	20.66
Social Studies	21.3	21.11	21.74
World Language	18.1	19.68	20.03
Visual & Performing Arts	17.05	18.36	17.84

High School Class Size Average By Department 3 year trend

Department	07-08	08-09	09-10
Business	19.0	21.62	20.60
Family & Cons. Science	13.8	15.27	15.14
Health	22.9	22.14	21.14
Physical Education	24.3	23.11	24.09
Technology Education	15.3	16.17	15.09

Class Size Report Summary 2009-2010

Conclusions

Enrollment 3 year trend

Decline of 3.8% (91 students) at elementary level

Increase of 2% (26 students) at middle school level

Decline of 1.2% (22 students) at high school level

Total decline of 1.6% (87 students) district wide

Class Size Report Summary 2009-2010

Conclusions

Elementary Class Size 3 year trend

Inconsistent pattern – up and down

Class size depends upon grade and school

Wide range of class sizes exist

Class Size Report Summary 2009-2010

Conclusions

Middle School Class Size 3 year trend

SRMS class size averages higher than ERMS

ERMS class size averages consistent across trend

SRMS class size averages increasing across trend*

*exception is math department

Class Size Report Summary 2009-2010

Conclusions

High School Class Size 3 year trend

Depends upon department

Most departments' class size averages are at or slightly above averages in 07-08.