

Ridgefield High School

700 North Salem Road | Ridgefield, CT 06877
P: 203-894-5750 | F: 203-431-2891
WEB: rhs.ridgefield.org | CCEB code 070640

Dr. Jacob Greenwood, *principal*
Mr. Terence Houlihan, *counseling supervisor*

Lori Bran, *school counselor* Katelyn Foran, *school counselor* Ashley Lowney, *school counselor* Dana McGroarty, *school counselor*
Diane Schirizzo, *school counselor* Scott Robert, *school counselor* Nicole Usher, *school counselor* Sue Harris, *administrative assistant*

SCHOOL & COMMUNITY



Accreditation: Connecticut State Board of Education and the New England Association of Schools and Colleges



Ridgefield High School is located in Ridgefield, Connecticut, a scenic suburban community of 25,000 residents located 55 miles from New York City in Fairfield County. Ridgefield is home to many executives, professionals, writers, artists and entrepreneurs.



RHS is a comprehensive, public, four-year high school offering sequential courses in all college preparatory subjects, plus a broad range of electives in art, theater, music, business, technology education and family and consumer science.



RHS has just over 1500 students and 158 faculty members.



RHS has two 18-week semesters with nine-week reporting periods and offers a summer session for academic enrichment; and schedules classes within the "block" framework.



RHS students compete as **Ridgefield Tigers** in the Fairfield County Interscholastic Athletic Conference (FCIAC) on 64 men's and women's teams. Over 50% of RHS students participate in interscholastic athletics during the year. Our programs are very competitive and have achieved high levels of success at both the league and state level. In the 2021-22 school year, RHS teams earned titles in Boys' Cross Country (FCIAC, CIAC Open), Girls' Cross Country (FCIAC), Boys' Basketball (FCIAC), Boys' Ice Hockey (FCIAC), and Dance (CIAC and New England Champions).



A majority of RHS students participate in at least one of the more than 50 special interest clubs, including: art, theater, student government, debate, publications, broadcast media and service. Students are recognized for outstanding work in service, special interests and national contests.

INTERPRETING the ACADEMIC RECORD

All courses taken at RHS are included in a weighted GPA according to the following scale

Letter	Points	GPA
A+	95-100	4.5
A	90-94	4.0
B+	85-89	3.5
B	80-84	3.0
C+	75-79	2.5
C	70-74	2.0
D	65-69	1.5
F	below 65	0

Selected core courses receive bonus weight:

- Honors Courses (H) in English, Math, Science, Social Studies, World Languages (+0.5)
- Advanced Placement (AP) courses (+1.0)
- UCONN ECE (UCONN) courses (+1.0)

Advanced Placement courses are offered in the following subjects: Biology, Calculus AB & BC, Chemistry, Computer Science A, English Language, English Literature, Environmental Science, Human Geography, Macro and Micro Economics, Music Theory, Physics, Psychology, Statistics, Studio Art, United States Government & Politics, United States History, World History and World Languages (French and Spanish).

UCONN ECE courses are offered in: Economics, English, Environmental Science, Geoscience, Family and Consumer Science and World Languages (Chinese, French, Latin and Spanish).

A weighted GPA is calculated at the end of the **sixth** semester and includes only those courses taken at Ridgefield High School.

525 students in grades 10-12 took over 1200 AP exams in May 2022.

- 90 % of these 2022 graduates went to four-year colleges
- 3% went to technical or two-year colleges

Ridgefield High School does not rank students.

Members of the Ridgefield High School Chapter of the National Honor Society have a special distinction as part of the only honor society affiliated with RHS.

MISSION STATEMENT

Our educational community strives to cultivate a highly engaging and personalized learning environment that encourages individual growth, resilience, citizenship and empathy.

CORE VALUES

To achieve our mission, Ridgefield High School commits to developing individuals who demonstrate the following skills and/or attributes:

Collaboration, Innovation, Mindfulness, Communication, Knowledge, Resilience

GRADUATION REQUIREMENTS

To graduate from RHS, students must accumulate a minimum of 25 credits in grade 9 -12.

Cluster	Subject(s)	Credits
HUM Humanities	English (4.0) Modern World History (1.0) US History (1.0) Government & Politics (0.5) World Language (1.0) Humanities (1.5) <i>English, Social Studies, Visual & Performing Arts, World Language</i>	9.0
STEM Science, Technology, Engineering, Mathematics	Mathematics (3.0) Science with Lab <i>Biology/Life Science (1.0)</i> <i>Chemistry/Physical Science (1.0)</i> <i>Physics (1.0)</i> STEM (3.0) <i>Science, Technology, Engineering, Mathematics, Business Concepts, Computer Applications 1 & 2, Marketing, Web Design, Accounting 1 & 2, Advanced Accounting 2, Personal Finance, Culinary 1 & 2, Fashion: Art, History & Life, Interior Design 1 & 2</i>	9.0
OPEN	Courses from any department (4.0)	4.0
PE/HEALTH	Health (0.5) Physical Education (1.0) Wellness (0.5)	2.0
MAS	Mastery Based Diploma Credit <i>Culminating Internship Activity (1.0)</i>	1.0



RHS students are encouraged to take seven credits during grades 9 and 10, along with six credits during grades 11 and 12.



During grades 11 and 12, students are permitted to take up to two pre-approved classes per year, online. These do not count towards GPA.



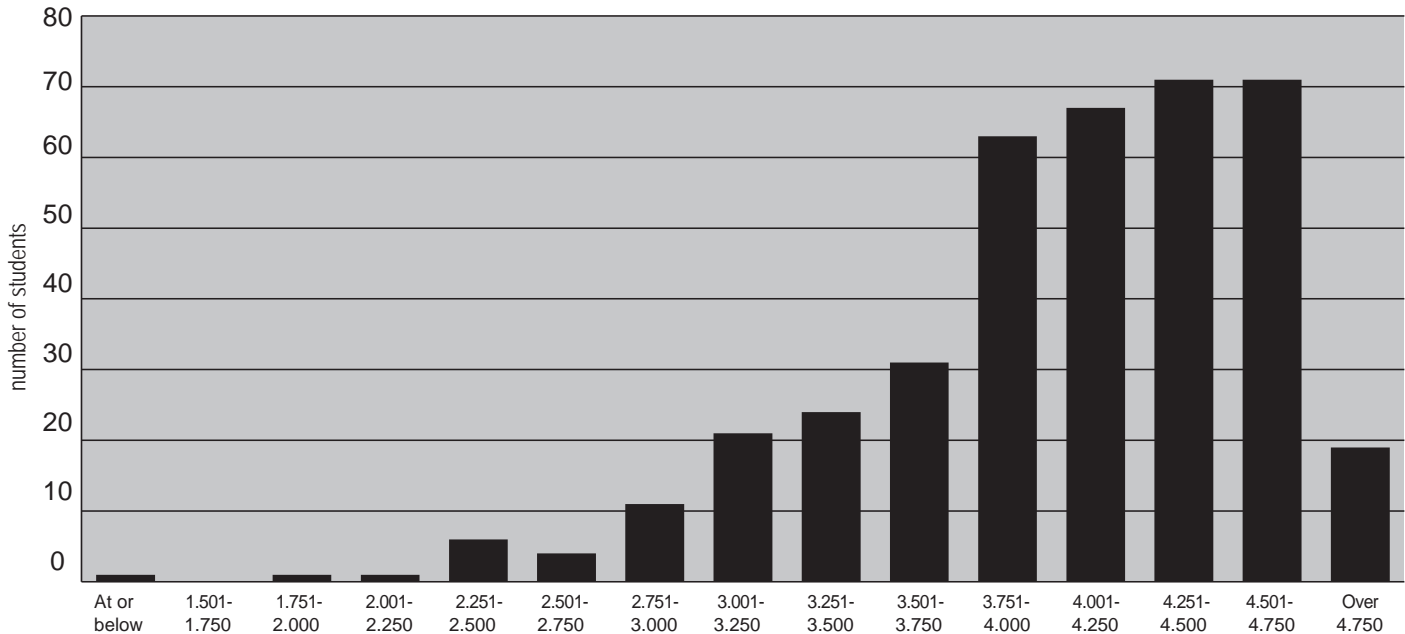
In the spring of 2020, during the COVID-19 emergency closure, RHS changed its grading practice to allow students to take a passing (P) grade as a final, year end grade. This P grade is not factored into a student's GPA.

Ridgefield HIGH SCHOOL

Class of 2023
 Seniors - 392
 National Merit Semi-Finalists - 2
 National Merit Commended Students - 21
 NMSQT Selection Index - 207
 Nationally Recognized Students - 8



WEIGHTED GRADE POINT AVERAGE RHS CLASS OF 2023



HONORS and ADVANCED PLACEMENT COURSES

SCIENCE

Biology Honors
 Chemistry Honors
 Physics Honors
 Biology AP
 Chemistry AP
 Geoscience/UCONN
 Environmental Science AP/UCONN
 Physics I AP
 Physics II AP

ENGLISH

English I Honors
 English II Honors
 English III Honors
 American Studies Honors (English)
 Bib & Myth in Contemporary
 Literature Honors
 Moral Issues in World Literature Honors
 English Language AP
 English Literature AP
 UCONN English

WORLD LANGUAGE

French IV Honors
 French V Honors/UCONN
 French AP
 Italian IV Honors
 Latin III Honors/UCONN
 Latin IV Honors/UCONN
 Mandarin IV Honors/UCONN
 Spanish IV Honors
 Spanish V Honors
 Spanish AP/UCONN

MATHEMATICS

Geometry Honors
 Algebra II Honors
 Algebra II Honors (Fall)
 Precalculus Honors
 Precalculus Honors (Spring)
 Calculus Honors
 Calculus AP AB
 Calculus AP BC
 Computer Science AP (A)
 Statistics AP
 Multivariable Calculus Honors

SOCIAL STUDIES

Modern History Honors
 United States History Honors
 American Studies Honors (History)
 World History AP
 United States History AP
 US Government & Politics AP
 Economics AP/UCONN
 Human Geography AP
 Psychology AP

VISUAL & PERFORMING ARTS

Music Theory AP
 Studio Art AP

FAMILY & CONSUMER SCIENCE

UCONN Ind/Family Development



RHS GRADUATES HAVE BEEN ACCEPTED TO THE FOLLOWING COLLEGES AND UNIVERSITIES

The University of Alabama	Drexel University	Manhattanville College	Rensselaer Polytechnic Institute
Allegheny College	Duke University	Marist College	Rhode Island College
American University	Eastern Connecticut State Univ.	University of Mary Washington	University of Rhode Island
Amherst College	University of Edinburgh	University of Maryland	Rhodes College
The University of Arizona	Elon University	Mass Institute of Technology	Rice University
Arizona State University - Tempe	Embry-Riddle Aeronautical Univ.	University of Massachusetts	University of Richmond
Assumption University	Emerson College	McGill University	University of Rochester
Auburn University	Emory University	Merrimack College	Roanoke College
Barnard College	Endicott College	Miami University, Oxford	Rochester Institute of Technology
Bates College	Fairfield University	University of Miami	Roger Williams University
Baylor University	Fashion Institute of Technology	Michigan State University	Sacred Heart University
Bentley University	University of Florida	University of Michigan	Saint Joseph's University
Berklee College of Music	Florida Atlantic University	Middlebury College	Saint Louis University
Binghamton University	Florida Gulf Coast University	University of Missouri	Saint Michael's College
Boston College	Florida State University	Mitchell College	Salve Regina University
Boston University	Fordham University	Montana State University	Sarah Lawrence College
Bowling Green State University	Franklin & Marshall College	Montclair State University	Santa Clara University
Brooklyn College of the CUNY	Full Sail University	Moravian College	University of Scranton
Brigham Young University	Furman University	Muhlenberg College	Siena College
University of British Columbia	University of Georgia	Naugatuck Valley CC	Skidmore College
Brown University	George Mason University	University of Nevada - Las Vegas	University of South Carolina
Bryant University	The George Washington University	New England College	University of Southern California
Bryn Mawr College	Georgetown University	University of New England	Southern Connecticut State Univ.
Bucknell University	Georgia Institute of Technology	University of New Hampshire	Southern Methodist University
University at Buffalo (SUNY)	Gettysburg College	University of New Haven	Stanford University
California Polytechnic State University, San Luis Obispo	Hamilton College	New York University	State University of New York
Carnegie Mellon University	Haverford College	Niagra University	Stony Brook University
Case Western Reserve University	Harvard College	University of North Carolina	Syracuse University
Central Connecticut State Univ.	High Point University	University of North Texas	The University of Tampa
Clark University	Hobart & William Smith Colleges	Northeastern University	Temple University
Clemson University	Hofstra University	Norwalk Community College	Texas A&M University
Coastal Carolina University	College of the Holy Cross	Norwich University	Towson University
Colby College	Howard University	University of Notre Dame	Trinity College
Colgate University	Indiana University at Bloomington	Oberlin College	Tufts University
College of Charleston	Iona University	The Ohio State University	Tulane University
Columbia University	Ithaca College	Ohio Wesleyan University	Union College (New York)
Connecticut College	James Madison University	Pace University, New York	United States Air Force Academy
The University of California	Johnson & Wales University	University of Pennsylvania	United States Naval Academy
University of Chicago	The Julliard School	Pennsylvania State University	Valley Forge Military College
University of Cincinnati	Keene State College	Pepperdine University	Vanderbilt University
University of Colorado - Boulder	Kenyon College	University of Pittsburgh	University of Vermont
University of Connecticut	King's College	Plymouth State University	Villanova University
Cornell University	Lafayette College	Pomona College	Virginia Tech
Dartmouth College	Lehigh University	Princeton University	University of Virginia
University of Delaware	Loyola Marymount University	Providence College	Wake Forest University
University of Denver	Loyola University Maryland	Purdue University	Western Connecticut State Univ.
DePaul University	Lynn University	Queen's University	College of William and Mary
Dickinson College	Macalester College	Quinnipiac University	University of Wisconsin, Madison
Drew University	University of Maine	Radford University	Xavier University
	Manhattan College	Regis University	Yale University